



DELIVERING  
INNOVATION  
TO PROTECT

[extract-technology.com](http://extract-technology.com)

# MOBILE CLEANROOMS



MOBILE  
CLEANROOM  
SOLUTIONS

NEW APPROACH  
TO CLEANROOM  
MANUFACTURING  
SPACE

FAST AND FLEXIBLE

STANDARD WIDTH MODEL



EXTENDED WIDTH  
MOBILE CLEANROOM

EXTENDED WIDTH MODEL





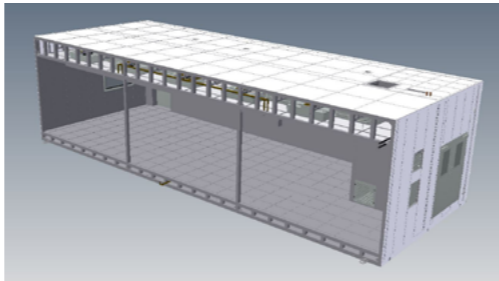
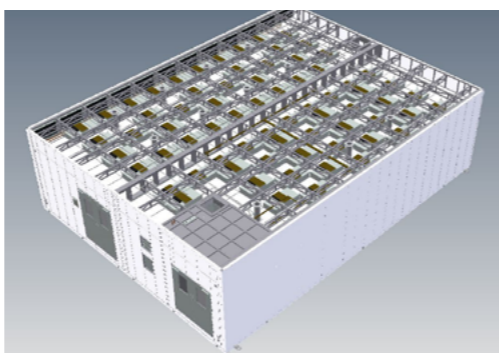
Our **self-contained, ready-to-use** design provides functional cleanroom space wherever and whenever you need it. Whether you want to **expand manufacturing, R&D or processing capacity** at an existing facility, a remote location, or around the globe, our MCRs can be transported and fully operational more rapidly than other cleanroom options.

**EXTRACT TECHNOLOGY**

IS PLEASED TO ADD MOBILE CLEANROOM SOLUTIONS (MCRs) TO OUR LEADING PORTFOLIO OF CONTAINMENT AND ASEPTIC SYSTEMS FOR THE PHARMACEUTICAL, BIOTECH AND NUCLEAR INDUSTRIES



OUR PRE-ENGINEERED MCRs PROVIDE FAST, FLEXIBLE CLEANROOM MANUFACTURING SPACE WITHOUT THE CONSIDERABLE TIME AND COST ASSOCIATED WITH MORE TRADITIONAL CLEANROOM OPTIONS



**DESIGN FEATURES**

- > Standard width, extended width and custom sizes available
- > Recirculating conditioned airflow
- > Room pressurization can be changed from positive to negative using the PLC touchscreen on certain models
- > cGMP design with continuous/seamless Bioguard wall and ceiling coatings
- > Epoxy coated seamless Bioguard padded floor with radius corners
- > Pre-Engineered with 3D modeling
- > Welded construction
- > HMI touchscreen controls
- > NEMA 4X Control Panel
- > VHP-ready with automated aeration phase
- > Pressure controlled operator and equipment airlocks
- > Easily and quickly deployable with limited site preparation
- > Possible accelerated depreciation as equipment

**APPLICATIONS**

**PHARMACEUTICAL:** ISO 7 or ISO 8 AIR QUALITY

**SEMICONDUCTOR:** ISO 5 or ISO 6 AIR QUALITY

**BIOLOGICAL SAFETY PRODUCTS:** BSL1, BSL2, BSL2+ or BSL3

**FLEXIBILITY FOR EFFECTIVE CAPACITY UTILIZATION**

Unlike traditional clean room manufacturing space, MCRs provide the flexibility you need to meet rapidly changing market demands. Additionally, these units can be rapidly repurposed to meet the evolving needs of your business, allowing you to optimize capacity utilization.

**INTELLECTUAL PROPERTY PROTECTION**

The MCRs provide intellectual property protection for your manufacturing or R&D through controlled access card reader door security.

**COST EFFECTIVE**

Traditional clean room facilities can often require high-cost, specialized maintenance and tend to generate high utilities costs. The MCR's self-contained design allows for simple, routine maintenance. In addition, your investment and time to market are reduced by utilizing pre-engineered solutions to avoid the time and expense of custom engineering your clean manufacturing space.





# BASE SPECIFICATIONS

## STANDARD WIDTH

Overall: 48'L x 18'W x 9'H

Main Room: 37' x 17'

(with remote HVAC)

Weight: Approx. 35,000 lbs

Floor loading: 500 lb./square ft.

## EXTENDED WIDTH

Overall: 48'L x 36'W x 9'H

Main Room: 37' x 34'

(with remote HVAC)

Weight: Approx. 68,000 lbs

Floor loading: 500 lb./square ft.

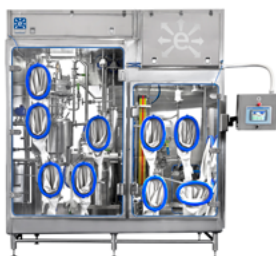
➤ Optional communication with BMS

## EXTRACT TECHNOLOGY

also offers containment and aseptic solutions:



DOWNFLOW BOOTHS



CONTAINMENT ISOLATORS



SAMPLING FACILITIES



PACK OFF AND PROCESS



ASEPTIC ISOLATORS



STANDARD PRODUCT RANGE

FOR MORE INFORMATION ON OUR PRODUCTS  
PLEASE VISIT OUR WEBSITE OR CONTACT US DIRECTLY:

### EXTRACT TECHNOLOGY

[extract-technology.com](http://extract-technology.com)

[info@extract-technology.com](mailto:info@extract-technology.com)



### EXTRACT TECHNOLOGY LTD UK OFFICE

+44 (0) 1484-432-727

BRADLEY JUNCTION IND ESTATE,  
LEEDS RD, HUDDERSFIELD, HD2  
1UR, UNITED KINGDOM

### EXTRACT TECHNOLOGY AMERICAS OFFICE

+1 608-562-7761

618 STATE STREET  
NEW LISBON, WI 53950, USA